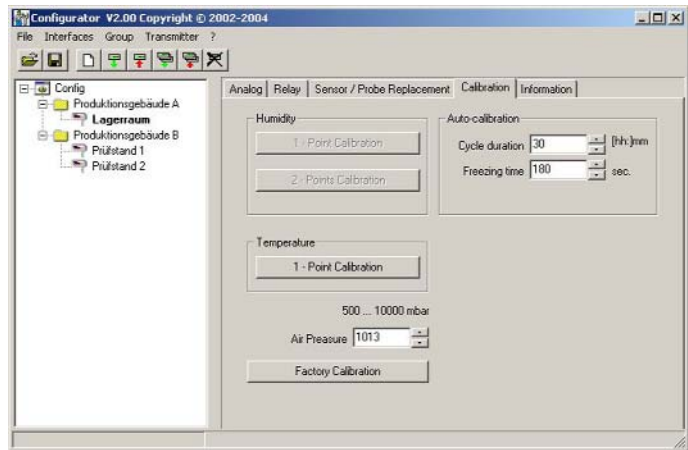


5.4 Calibration



Auto Calibration:

cycle duration: defines the time slice of the auto calibration.

freezing time: defines the time how long the analogue resp. display values can be kept during the auto calibration.

1-point calibration Humidity:

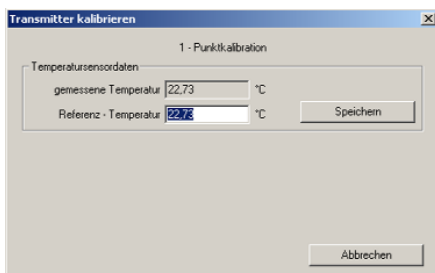
This function is not available for the EE35 series.

2-point calibration Humidity:

This function is not available for the EE35 series.

1-point calibration Temperature:

If the working range is limited to a narrow temperature range, one-point calibration will be sufficient within this working range.



- 1) Place the probe at the reference temperature and allow stabilisation for approx. 30 minutes.
- 2) Click on the Temperature 1-Point Calibration button.
The measured value will appear in both input fields. (see additional window)
- 3) Replace the value in the input field "Temperature Reading" with the reference temperature.
- 4) By clicking on "Save", the temperature reading of the transmitter will be adjusted to the reference temperature.
- 5) The process is complete when the message "Calibration Successful" appears.